

**CITIZEN PARTICIPATION PLAN**

**FOR THE**

**FULTON MUNICIPAL WORKS FORMER MANUFACTURED GAS PLANT  
SITE**

**Nevins, and DeGraw Streets**

**Brooklyn, NY 11217**

**Prepared by**

**National Grid**

**July 2017**

**TABLE OF CONTENTS**

**1.0 INTRODUCTION.....3**

**2.0 BASIC SITE INFORMATION .....3**

**3.0 REMEDIAL PROGRAM OVERVIEW .....6**

    3.1 New York State Remedial Program Overview.....6

    3.2 Project Area Investigation History .....6

**4.0 CITIZEN PARTICIPATION ACTIVITIES .....7**

    4.1 Goals and Objectives .....7

    4.2 Tools and Methods.....8

        4.2.1 Document Repositories .....8

        4.2.2 Meetings, Meeting Fact Sheets and Comment Period.....10

        4.2.3 Community Outreach.....11

        4.2.4 Telephone Hotline .....11

        4.2.5 Website .....11

        4.2.6 Responsiveness Summary.....11

    4.3 Roles and Responsibilities .....12

    4.4 Schedule for Implementing Elements of the CPP .....12

**5.0 SUMMARY .....13**

**List of Figures**

---

1 Site Location Map .....5

**List of Appendices**

---

Glossary of Key Citizen Participation Terms and Major Program Elements.....A

Identification of Document Repositories.....B

Community Contact List.....C

Identification of Project Management Contacts .....D

APPLICANT: NATIONAL GRID  
SITE NAME: FULTON MUNICIPAL WORKS FORMER MANUFACTURED GAS PLANT  
SITE ADDRESS: NEVINS, SACKETT AND DEGRAW STREETS  
SITE COUNTY: KINGS  
SITE NUMBER: 224051

## **1.0 INTRODUCTION**

Citizen participation is an integral component of remedial programs in New York State. Input on the remedial program from affected or interested individuals and organizations helps ensure outcomes that account for both technical and human concerns for protecting public health and the environment. A project-specific plan is needed to inform and involve community residents, public and private leaders, and other stakeholders. This Citizen Participation Plan (CPP) documents the planned project-specific public outreach activities and resources organized for the remedial program associated with the Fulton Municipal Works former Manufactured Gas Plant (MGP) site (“Site”).

The primary purpose of this CPP is to outline a variety of communication methods that, based on applicable New York State law and New York State Department of Environmental Conservation (NYSDEC) regulations and guidance, provide for constructive communication of program activities between the stakeholders and other interested parties. This CPP includes methods intended to inform interested parties of program developments, elicit responses and public involvement, and provide a central point of contact for inquiries regarding the remedial program for the Site. Given this context, this CPP presents the planned communication and outreach activities, describes how interested individuals and groups can participate in the remedial program, and provides a variety of reference materials to facilitate gaining access to project-specific information and management personnel.

National Grid is committed to sharing information with the community, and will provide updates to ensure the public has the latest information. Handouts will also be distributed throughout the community to supplement communications, as needed.

Both the NYSDEC and National Grid are committed to the implementation of this CPP as required by Title 6 of the New York Code of Rules and Regulations (NYCRR) Part 375, applicable NYSDEC guidance (e.g., Citizen Participation in New York’s Hazardous Waste Site Remediation Program: A Guidebook, dated June 1998), the Administrative Order on Consent (Index # A2-0552-0606) and the statewide Inactive Hazardous Waste Site Citizen Participation Plan (NYSDEC, 1988). As required by 6 NYCRR Part 375-1.10, NYSDEC and National Grid will review and update this CPP to account for significant changes in the Site remedial program.

## **2.0 BASIC SITE INFORMATION**

The Site is located along Sackett and DeGraw streets between the Gowanus Canal and 3<sup>rd</sup> Avenue in Brooklyn, N.Y. (Figure 1). The Site is comprised of several separate parcels and

owners with the City of New York owning the largest individual parcel where the Thomas Greene park is located.

### **History and Operations**

A manufactured gas plant operated at the Site from approximately 1886 to 1933. The manufacture of gas, in general terms, consisted of heating coal and/or petroleum and recovering the vapors, which were condensed and purified to produce gas. By-products from the heating and purification processes included coal tar, sludge, oils, ashes, contaminated wood chips (used for gas purification) and other chemicals. These byproducts were either recycled for energy recovery and chemical feedstocks or disposed.

The Site was owned by predecessors to National Grid at the time the MGP operations were active. However, none of the properties comprising the Site are currently owned by National Grid. The current land uses at the Site are the Thomas Greene Playground and the Douglas and Degraw Pool, and several other commercial/industrial uses.

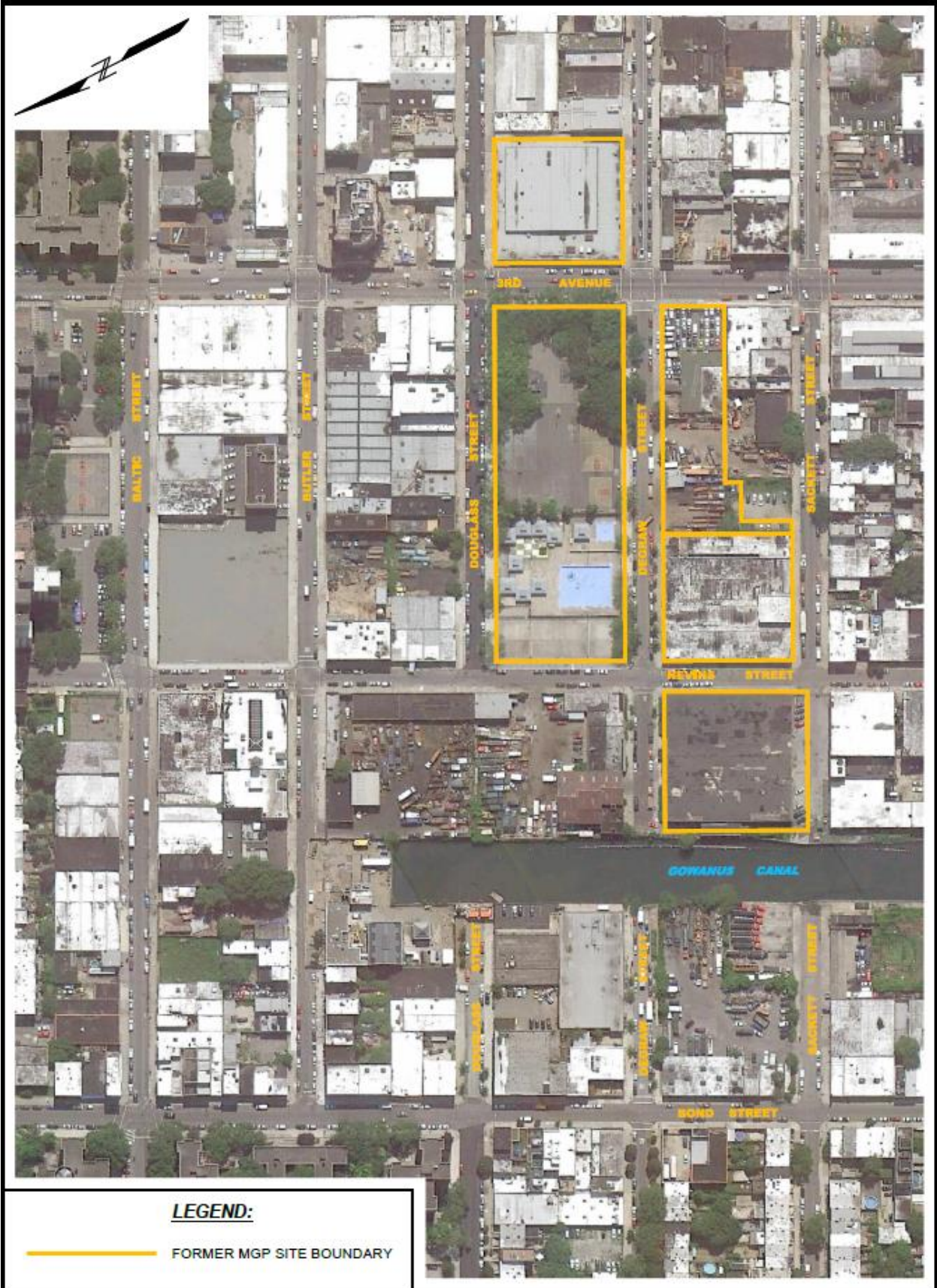
### **Current Site Description**

The Site is located on six properties covering, in total, approximately 5.5 acres, roughly bounded and bisected by Nevins, Sackett and DeGraw streets in Brooklyn. Neither National Grid nor its predecessor companies have owned the land for many years, and it is presently owned and used by multiple private owners, tenants of owners and the City of New York Parks and Recreation Department, whose property includes a playground, concrete swimming pool, changing facilities, and basketball and handball courts (all covering the surface with concrete), as well as grassed areas. The commercial/industrial areas are fully developed, including buildings and similar facilities and paved areas.

The properties comprising the Former MGP Site are:

<b>Address</b>	<b>Block and Lot</b>
270 Nevins Street	Block 425, Lot 1
225 Nevins Street	Block 419, Lot 1
537 Sackett Street	Block 426, Lot 49
560 Degraw Street	Block 426, Lot 17
191 3 <sup>rd</sup> Avenue	Block 420, Lot 1

There are residential properties adjacent to the Site.



### **3.0 REMEDIAL PROGRAM OVERVIEW**

#### **3.1 New York State Remedial Program Overview**

In February 2007, KeySpan, a predecessor of National Grid, entered into a multiple-site Order on Consent and Administrative Settlement (the Order), Index # A2-0552-0606, with the NYSDEC. The Site was added to the Order in a Modification dated August 2007. The Order requires a Remedial Investigation of the Site, which is to be followed by a Feasibility Study of remedial options, a Remedial Action Plan, a Remedial Design and then construction and operation of a remedy to eliminate, to the extent possible, environmental hazards detected at the Site. The Order also permits National Grid to perform one or more partial Interim Remedial Measures to more quickly remediate contamination prior to adoption of a Remedial Action Plan. Finally, National Grid will submit to NYSDEC a detailed post-remedy Operations and Maintenance (O&M) Plan after the remediation work is completed. The O&M Plan provides the means to track the effectiveness of the completed remedial work.

For more information on the remedial program and process in New York State, interested parties can contact any of the state representatives listed in Appendix D.

#### **3.2 Project Area Investigation History**

A Preliminary Site Assessment was prepared for the U.S. Environmental Protection Agency (EPA) in September 1986. EPA concluded that no further remedial action was required and archived the Site in the EPA's Superfund Program.

Between April and June 2007, a Site Characterization conducted under the NYSDEC identified the presence of materials expected at a former MGP site, as well as other wastes associated with industrial activities. The materials, including coal tar contamination, were generally found four feet or more below the surface. Coal tar was not observed at or near the ground surface. Consequently, the potential for human exposure to coal tar contaminants by routine users of the park, workers involved in park operations or people on the surface in the surrounding neighborhood is low.

Between April 2008 and May 2011, National Grid conducted a Remedial Investigation (RI) at the Site. The RI evaluated the nature and extent of potential impacts from the MGP operation, as well as the potential human health and ecological risks. This RI results showed that MGP related impacts are below ground and not accessible by the public. In addition, MGP-related impacts do not pose a risk to human health under current site use conditions.

### **4.0 CITIZEN PARTICIPATION ACTIVITIES**

This section presents the specific citizen participation and outreach activities planned for implementation during the remedial program in accordance with 6 NYCRR Part 375. Operating

under project-specific citizen participation goals, clearly defined objectives will be achieved by implementing a range of communication tools and methods. The planned activities are geared toward making project-specific information (e.g., work plans, technical reports and information sheet summaries) available to the public; facilitating communication among stakeholders, including the creation of contact lists; scheduling and conducting public meetings; establishing comment periods; and notifying the public of document availability, public meetings, comment periods and major program milestones.

The Site is located in an Environmental Justice Area. Environmental justice is defined as the fair treatment and meaningful involvement of all people regardless of race, color, national origin, or income with respect to the development, implementation, and enforcement of environmental laws, regulations, and policies.

Environmental justice efforts focus on improving the environment in communities, specifically minority and low-income communities, and addressing disproportionate adverse environmental impacts that may exist in those communities.

Furthermore, there may be noise, odor and/or truck traffic impacts coming from the Site.

#### **4.1 Goals and Objectives**

The central goal of this CPP is to achieve effective, open communication among stakeholders and interested parties, National Grid and the NYSDEC. Common goals include:

- Communicate program goals and major milestones, actions and outcomes;
- Inform citizens and others of ongoing project activities, status and progress;
- Provide citizens (and all stakeholders) a forum for input and comment; and
- Communicate with the public about the site and potential issues related to human health and the environment.

In order to accomplish these goals, the following specific objectives will be pursued through the implementation of this CPP:

- Consistently communicate goals, accomplishments and status of the project to the contact list (including community leaders, public officials and the wider community, as necessary) through appropriate means;
- Establish, maintain, update and utilize the contact lists;
- Educate the community, in lay terms, about the nature and magnitude of potential site risks, including instructions for mitigating risk (if appropriate) and assurances that the

environment and worker/public health and safety are protected;

- Provide interested parties the opportunity to review and comment on technical reports generated through the remedial program (e.g., public comment periods and document repositories as required by 6 NYCRR Part 375);
- Provide interested parties the opportunity to present opinions and ideas during the remedial program (e.g., conduct public meeting/comment period and availability session as required by 6 NYCRR Part 375);
- Provide responses to public review and comment (e.g., prepare a responsiveness summary as required by 6 NYCRR Part 375);
- Provide the news media with press releases and/or interviews with National Grid-authorized spokespersons, as available, to ensure accurate coverage of remedial program activities;
- Provide a designated project spokesperson as point of contact through which community inquiries regarding the project can be addressed consistently and effectively; and
- Periodically review the effectiveness of the citizen participation and outreach activities during the remedial program and make adjustments in this CPP's methods and/or activities, if necessary.

The community contact list is provided in Appendix C and the former Fulton MGP Site Project management contacts, including contacts from NYSDEC, New York State Department of Health (NYSDOH) and National Grid, are provided in Appendix D.

## **4.2 Tools and Methods**

There are many ways to reach and communicate with the community and other interested parties as this CPP is implemented over the course of the remedial program. A variety of outreach tools and methods will be used to ensure proper communication with the interested parties that include various organizations, public and business leaders, and a diverse assemblage of individuals of all ages, education backgrounds and cultures.

Interested parties will be informed and invited to participate in the planned citizen participation activities through appropriate means such as mailings to the contact list, legal notice in newspapers, press releases, notices posted on the Site's website, information sheets and other documents made available in the document repositories.

The following specific public participation activities have been or will be implemented as required by 6 NYCRR Part 375 and current NYSDEC guidance.



#### 4.2.1 Document Repositories

Document repositories have been established at the offices of Brooklyn Community Board 6, the NYSDEC Central Office and the Carroll Gardens Branch Library, which maintain in one file all of the relevant documents related to the Site.

Brooklyn Community Board 6  
250 Baltic Street  
Brooklyn, NY 11201-6401  
(718) 643-3027

NYSDEC Central Office  
625 Broadway  
Albany, NY 12233-7014  
John Miller  
518-402-9589  
[john.miller@dec.nyc.gov](mailto:john.miller@dec.nyc.gov)

Brooklyn Public Library  
Carroll Gardens Branch Library  
396 Clinton Avenue  
Brooklyn, NY 11231  
(718) 596-6972

The following documents are available in the repositories or will be made available when completed and accepted by the NYSDEC:

- Administrative Order on Consent
- Citizen Participation Plan
- Fact Sheet Announcing the Start of the Remedial Investigation
- Remedial Investigation Work Plan, as well as several remedial investigation work plan addendums
- Remedial Investigation Report
- Interim Remedial Measure (IRM) Pre-Design Investigation Work Plan

The following documents, as available, will be placed in the repositories:

- Feasibility Study Report

- Proposed Remedial Action Plan
- Record of Decision (ROD)
- Remedial Design
- Post-Remedial O&M Plan
- Other Materials (e.g., information sheets, notices, etc.)

These documents are also available on the project website at [www.fultonmgpsite.com](http://www.fultonmgpsite.com).

#### **4.2.2 Meetings, Meeting Fact Sheets and Comment Period**

Prior to the beginning of the RI, the NYSDEC and KeySpan/National Grid held two public meetings in May 2008 to discuss investigation activities. The NYSDEC held a public meeting in October 2012 where they, along with National Grid representatives, shared findings of the RI Report and interim remedial measures (IRMs) completed to date, and answered questions regarding project area characterization, data and activities.

Following that, the NYSDEC prepared the Proposed Remedial Action Plan (PRAP) following its review of National Grid's Feasibility Study for the Site which evaluated potential remedial alternatives and recommend a preferred remedial approach.

On April 16, 2015, a public meeting was held to discuss the proposed remedy. After the PRAP comment period ended, NYSDEC and NYSDOH reviewed all public comments from the public meeting and the comments that were submitted during the comment period and, where applicable, incorporated the comments into the Remedial Action Program.

Legal notice of meetings are published in the local newspapers that serve the neighborhood surrounding the Site, and fact sheets announcing the meetings and summarizing the documents are prepared and disseminated to interested parties and the community.

Fact sheets were distributed to interested parties and proximate community at the time of the beginning of the Remedial Investigation, the acceptance of the RI Report (including announcement of public meeting) and when the proposed remedy was announced. We attend regularly scheduled meetings of the Gowanus Canal Community Advisory Board.

We have briefed the Friends of Douglass/Greene Park, Wyckoff Gardens Tenants Association, Gowanus Houses Tenants Association and Gowanus Canal Conservancy, as well as individual community members who have expressed interest in the Site.

### **4.2.3 Community Outreach**

National Grid is committed to sharing information with the community and has a number of resources for the community to use to get further information, including a website, mailers, a hotline number and document repositories.

Interested parties will be informed and invited to participate in the planned citizen participation activities through appropriate means such as mailings to the contact list, legal notice in newspapers, press releases, information sheets and other documents made available in the document repositories.

Information newsletters are prepared and distributed to the contact list in order to announce major project milestones and accomplishments throughout the remedial program (e.g., start of construction, major report completion, etc.). Written in lay terms, information newsletters describe and summarize the Site area history, review the goals of the remedial program, update the status of the Site plans and/or results, list opportunities for citizen involvement, list key contacts and list the location of the document repositories.

### **4.2.4. Telephone Hotline**

National Grid established a telephone hotline for neighbors of the Site. The phone number is (718) 982-7349. There will be occasional news updates and the hotline can be used to leave questions about the investigation.

### **4.2.5 Website**

National Grid has developed a website for the project at [www.fultonmgpsite.com](http://www.fultonmgpsite.com). The website includes background information about manufactured gas plants, historical information about the Site, a description of work that has been completed during the project, regular updates about remediation activities and contact information, including links to the NYSDEC's MGP website. The homepage contains updates of activities and current site status related to the investigation and remediation of the Site. A key documents section contains all of the major reports completed during the project, and an archive of fact sheets and weekly reports.

### **4.2.6 Responsiveness Summary**

Public questions, comments and concerns voiced during the public meeting and collected during the comment period after the PRAP meeting were addressed by the NYSDEC and published in the Remedial Action Program's Responsiveness Summary. Agency responses addressed both the broad general comments and the significant questions communicated by the interested parties.

### **4.3 Roles and Responsibilities**

The specific roles and associated responsibilities for implementing this CPP are:

- John Miller, NYSDEC Remedial Project Manager – The NYSDEC project manager is responsible for enforcement, oversight and management of the overall remedial program. Typical citizen participation-related activities include making presentations at public meetings, reviewing project documents such as information sheets, and providing technical assistance in preparing the responsiveness summary or answering public inquiries.
- Thomas Panzone, NYSDEC Citizen Participation Specialist – The citizen participation specialist assists the project managers in implementing the CPP. Typical activities include preparation and/or review of information sheets and coordination of public meetings and availability sessions.
- Patrick Van Rossem, National Grid Project Manager – The National Grid project manager, in cooperation with the NYSDEC project manager, is responsible for implementing the overall remedial program at the Site.
- April Dubison, National Grid Community Relations Representative – Typical citizen participation-related activities include management of CPP implementation, providing updates to the public, coordinating public meetings and providing assistance to the NYSDEC project manager and citizen participation specialist.

### **4.4 Schedule for Implementing Elements of the CPP**

National Grid began implementing elements of this CPP in May 2007 after the NYSDEC began its Site Characterization field work and has continued on since August 2007 when the Order was entered with NYSDEC.

CPP activities have continued for the project to date and through the completion of the Remedial Investigation in May 2011, NYSDEC's approval of the Remedial Investigation Report in July 2012, the Interim Remedial Measure Pre-design Investigation, which was conducted from June to December 2012, the public meeting to announce the Remedial Investigation Report findings in October 2102 and the public meeting to discuss the proposed remedy in April 2015 .

National Grid established document repositories and a telephone hotline, developed a public-facing website to provide members of the community with information related to the history and remediation of the Site, distributed newsletters and fact sheets, held a community meeting, and met one-on-one with property owners and other members of the public to ensure they were well informed of all aspects of the planning and reporting processes.

National Grid will continue to carry out elements of this plan upon its completion of work related to major project milestones.

## **5.0 SUMMARY**

Guided by the goals and objectives of this CPP, implementation of the planned public outreach and citizen participation activities ensures the timely communication of important program information of interest to the local community. Citizen involvement and interaction in the remedial program is being facilitated through specific opportunities such as public meetings, public comment periods, availability sessions and use of the Site's website and document repositories. Throughout the remedial program, this CPP and its specific outreach tools and methods are monitored and, as required and agreed by the NYSDEC and National Grid, adjusted to improve its effectiveness in responding to community needs.

National Grid is committed to sharing information with the community, and will regularly share information to ensure everyone is kept up to date with latest information. Handouts will also be distributed throughout the community as needed to support communication and updates.

## APPENDIX A

### Glossary of Key Citizen Participation Terms and Major Program Elements

**Citizen Participation Plan (CPP)** – A document that describes the project-specific citizen participation and outreach activities that will take place alongside the technical components of the remedial program. The CPP also provides project information, citizen participation goals and objectives, and lists of contact persons and document repositories.

**Citizen Participation Specialist** – An NYSDEC staff member whose duty it is to provide guidance and assistance in carrying out the CPP. The citizen participation specialist is the key contact for public inquiries about the project and the remedial activities.

**Contact List** – A list in the CPP (Appendix C) containing names and addresses of individuals, groups, organizations, news media and public representatives interested and/or affected by the project. The contact list is used to distribute important information and notices about the project and the remedial program.

**Document Repositories** – Project documents and other information are placed in the document repositories to facilitate convenient public access to these materials. Documents are available for public reference and review at the offices of Community Board 6, the NYSDEC Central Office and the Carroll Gardens Branch Library. Refer to Appendix B for more information about the document repositories' locations and hours of operation.

**Feasibility Study (FS)** – Based on information gathered during the Remedial Investigation (RI), the FS is a process for developing, evaluating and selecting appropriate Remedial Action (RA) for limiting or eliminating the potential human and environmental hazards of a site. The FS sets out the goals of the remedial actions to be taken, evaluates the most appropriate alternatives and selects the best alternative based on several criteria. The selected remedy is then recommended for implementation in the Proposed Remedial Design Plan, which is subject to public review and comment.

**Interim Remedial Measure (IRM)** – A discrete action that can be conducted at a site relatively quickly to reduce the risk to people's health and the environment from a well-defined waste problem. An IRM can involve cutting and plugging waste conduits, removing contaminated soil and securing a site.

**Non-Aqueous Phase Liquid (NAPL)** – An immiscible liquid that remains as a separate phase or layer in the environment.

**Polycyclic Aromatic Hydrocarbons (PAHs)** – Contaminants typically found at MGP sites and associated with coal tar residues.

**Remedial Design (RD)** – This report will include a detailed description of the remedial objectives and the means by which each essential element of the selected remedial alternative

## APPENDIX A

### Glossary of Key Citizen Participation Terms and Major Program Elements

will be implemented to achieve those objectives. It incorporates the findings of the FS Report to provide a remedial design that will be implemented during the performance of the cleanup activities at the Site.

**Remedial Investigation (RI)** – A process to determine the nature and extent of contamination at a site by analyzing data collected from sampling (e.g., water, soil, air, etc.) at a site. Information gathered throughout the RI is then used to conduct a Focused Feasibility Study (FFS), which proposes and evaluates various remedial alternatives for the Site.

**Responsiveness Summary** – The Responsiveness Summary is prepared by the NYSDEC to address public comments, questions and concerns regarding the proposed remedial action to be taken at a site. The Responsiveness Summary was issued as part of the Remedial Action Program.

**Site Management Plan (SMP)** – A Site Management Plan is a guidance document that is required by the NYSDEC for properties where residual contaminants remain below ground. The document helps to ensure properties are managed safely to protect the public and the environment. The SMP provides direction on how to protect your property, workers and the general public from coming into contact with residuals found below the ground surface. It also provides guidelines for excavation, redevelopment, adding utilities and any other work that would require the movement of ground soil.

**Volatile Aromatic Hydrocarbons** – Benzene, toluene, ethylbenzene and xylene (BTEX) are volatile aromatic hydrocarbons and typical contaminants found at MGP sites and other sites where petroleum, coal, oil, refined products and other hydrocarbons were combusted or used.

## APPENDIX B

### Identification of Document Repositories

Brooklyn Community Board 6  
250 Baltic Street  
Brooklyn, NY 11201-6401  
(718) 643-3027  
Call for Appointment

Carroll Gardens Branch Library  
396 Clinton Avenue  
Brooklyn, NY 11231  
(718) 596-6972

NYSDEC Central Office  
625 Broadway  
Albany, NY 12233-7014  
Attn: John Miller  
(518) 402-9589  
[john.miller@dec.state.ny.us](mailto:john.miller@dec.state.ny.us)



## APPENDIX C

### Community Contact List

#### Affected and/or Interested Parties

Nevins Canal Corp.  
116 John Street, Room 312  
New York, NY 10038

270 Nevins St. Properties, LLC  
116 John Street  
New York, NY 10038

Eastern Effects, Inc.  
270 Nevins Street  
Brooklyn, NY 11217

ATS Realty Inc.  
c/o Adams Book Co.  
537 Sackett Street  
Brooklyn, NY 11217

Adams Book Co.  
537 Sackett Street  
Brooklyn, NY 11217

Associated Mechanical Incorporated  
549 Sackett Street  
Brooklyn, NY 11217

City New York, Parks Dept.  
830 5<sup>th</sup> Avenue  
New York, NY 10021

242 Nevins, Inc.  
444 3<sup>rd</sup> Ave  
Brooklyn, NY 11215-3190

Jaez Realty, LLC  
42 West 48<sup>th</sup> Street  
New York, NY 10036

Royal Items  
595 Degraw Street,  
Brooklyn, NY 11217

## APPENDIX C

### Community Contact List

Brooklyn Boulders  
575 Degraw Street  
Brooklyn, NY 11217

Abatemarco Realty Corp.  
224 3<sup>rd</sup> Ave.  
Brooklyn, NY 11217-3036

#### **Government**

##### **Elected Official**

Brooklyn Borough President

##### **Contact Information**

Hon. Eric Adams  
Brooklyn Borough Hall  
209 Joralemon Street  
Brooklyn, NY 11201

City Council Member

Hon. Stephen Levin  
410 Atlantic Ave.  
Brooklyn, NY 11217  
(718) 875-5200

Congresswoman

Hon. Nydia Velazquez  
16 Court Street, Suite 1006  
Brooklyn, NY 11241

Assemblywoman

Hon. Jo Anne Simon  
341 Smith Street  
Brooklyn, NY 11231  
(718) 246-4889

State Senator

Hon. Velmanette Montgomery  
30 3<sup>rd</sup> Avenue, Room 615  
Brooklyn, NY 11217  
(718) 643-6140

**Brooklyn Community Board 6**

Craig R. Hammerman, Mgr.  
250 Baltic Street  
Brooklyn, NY 11201  
(718) 643-3027

**Community Groups**

<b>Group</b>	<b>Contact</b>
Gowanus Canal Community Advisory Group (CAG)	Doug Sarno
Gowanus Canal Conservancy	Andrea Parker
Southwest Brooklyn Industrial Development Corporation	Andrea Devening
Friends and Residents of Greater Gowanus (FROGG)	Marlene Donnelly
Fifth Avenue Committee	Michele de la Uz
Gowanus Houses Tenants Association	Edward Tyre
Gowanus Alliance	Paul A. Basile
Carroll Gardens Neighborhood Association	Maria Pagano
Friends of Douglass/Greene Park	Sue Wolfe
Wycoff Gardens Tenants Association	Charlene Nimmons

**Community Newspapers**

**Outlet**  
Brooklyn Papers  
Brooklyn Eagle  
Courier Life’s Brooklyn Daily

**Community Blogs**

The Brownstoner	<a href="http://www.brownstoner.com">http://www.brownstoner.com</a>
Pardon Me For Asking	<a href="http://pardonmeforasking.blogspot.com">http://pardonmeforasking.blogspot.com</a>
Mcbrooklyn	<a href="http://www.mcbrooklyn.blogspot.com">http://www.mcbrooklyn.blogspot.com</a>
DNAinfo	<a href="http://www.dnainfo.com/">http://www.dnainfo.com/</a>

## APPENDIX D

### Identification of Project Management Contacts

#### **New York State Department of Environmental Conservation**

John Miller, P.E.

New York State Department of Environmental Conservation

625 Broadway, Albany, NY 12233

Phone: 518-402-9589

[john.miller@dec.ny.gov](mailto:john.miller@dec.ny.gov)

#### **New York State Department of Health**

Christopher M. Doroski, Public Health Specialist 2

Bureau of Environmental Exposure Investigation

Empire State Plaza

Corning Tower, Room 1787

Albany, NY 12233

(800) 458-1158, ext. 27860

(518) 402-7860

Email: [BEEI@health.state.ny.us](mailto:BEEI@health.state.ny.us)

#### **National Grid**

April Dubison, Community Relations Representative

Fleet Services Administration Building

287 Maspeth Avenue

Brooklyn, NY 11211

Fulton MGP Project Hotline Telephone – (718) 982-7349

Please leave a message on the hotline and your call will be promptly returned.